



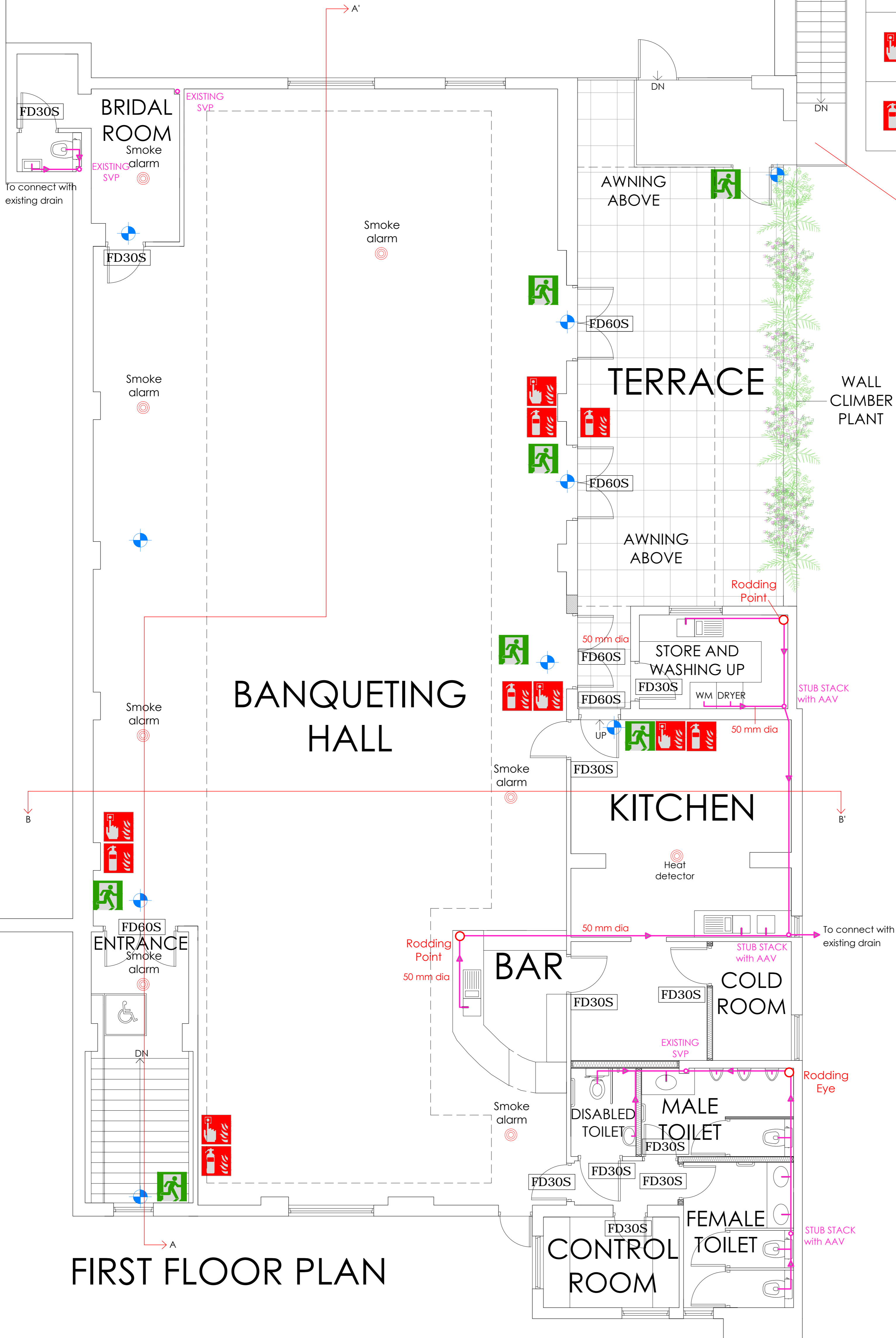


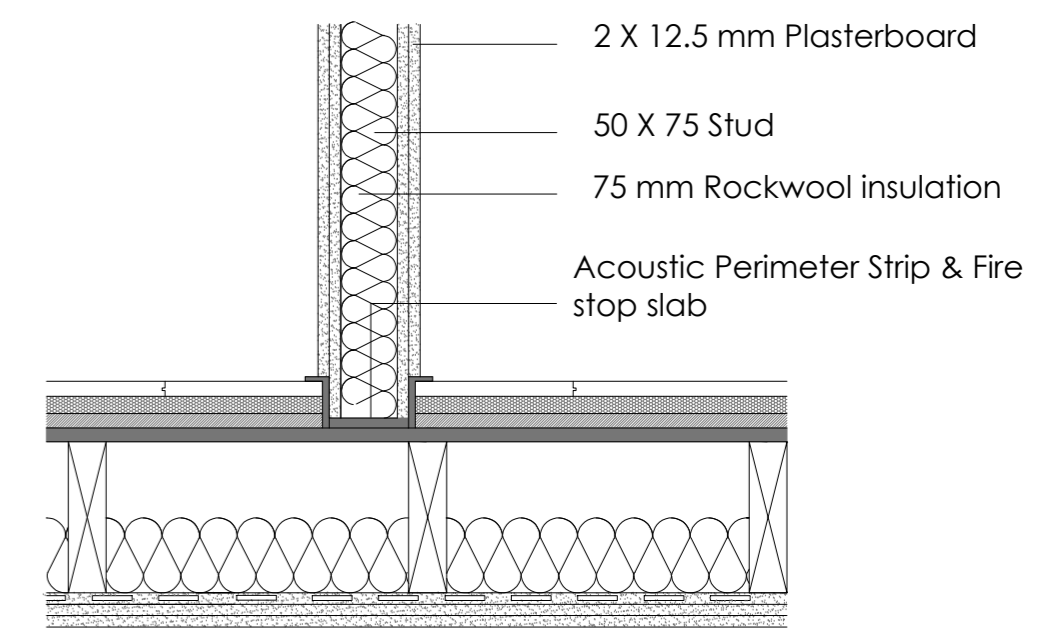
LEGEND

	FIRE EXIT SIGN
	EMERGENCY LIGHTING
	ALARM SYSTEM/ CALL POINT
	FIRE EXTINGUISHERS

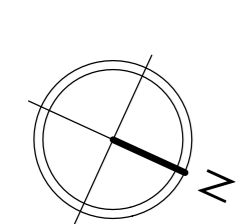
THIS IS AN EXISTING FIRE EXIT
(ALSO SERVING OTHER
PROPERTIES)



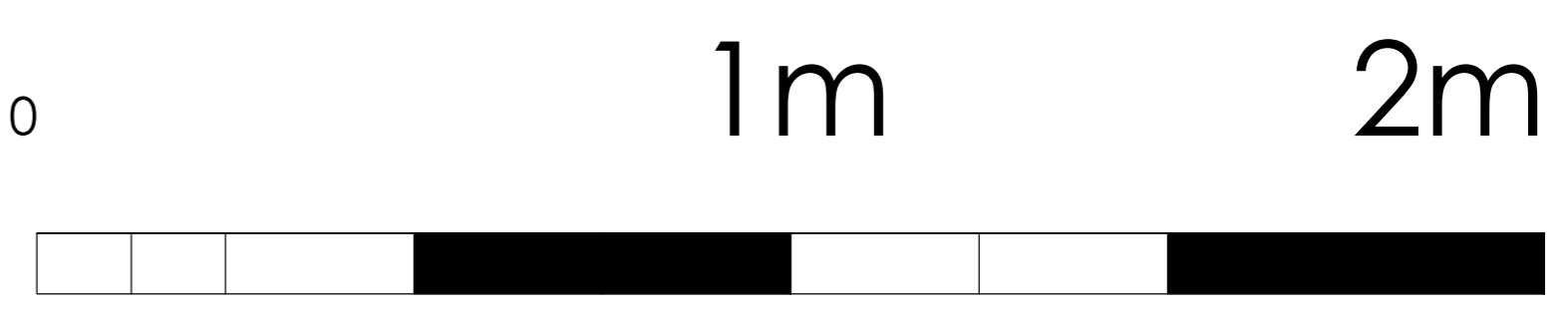
INTERNAL PARTITIONS DETAIL 1(1:10) 30 minutes fire resistant 130mm



FIRST FLOOR PLAN



1:10



PROJECT	DWG NO.	SCALE	DETAIL	24.05.2017 SUBMITTED TO BUILDING CONTROL DEPT. BARNET	A 27.06.2017 QUERIES ANSWERED	B 05.07.2017 QUERIES DATED 03/07/2017 ANSWERED	PROJECT NO.	PR Architecture Ltd. Chartered Architect 120, Pinner Road, Harrow, HA1 4JD. Tel: 0208 357 2304
158 STATION ROAD, EDGWARE, HA8 7AW	52C	1:50 @ A1	PROPOSED FIRST FLOOR PLAN AND DETAIL	C 24.08.2017			17.10	
PROPOSED BUILDING				ISSUED FOR TENDER				